

## Wound Chip Beads

### FEATURES

The SMB chips are our high performance wound chip beads. SMB chips are constructed with a wire wound structure and have a higher current capacity than multilayer chip beads. Jaro SMB chips have the high quality characteristics suitable for your design needs.

**High Current Handling:** SMB chips are able to withstand currents up to 6A DC.

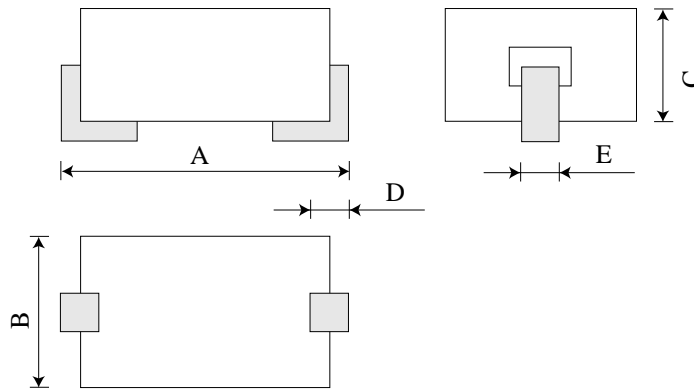
**Low DC Resistance:** SMB chip beads have low DC resistance.

**Multiple Size Availability:** SMB chip beads are available in three sizes: 302520, 403025 and 853025.

### PRODUCT IDENTIFICATION

Product Item Code	Dimension	Packaging Style: B,T
SMB	403025	B

### PRODUCT DIMENSIONS

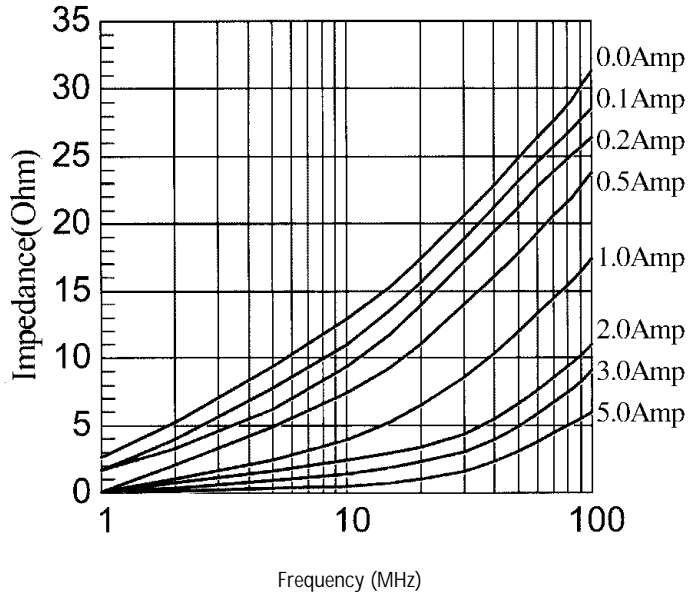


Dimensions in mm (inch)

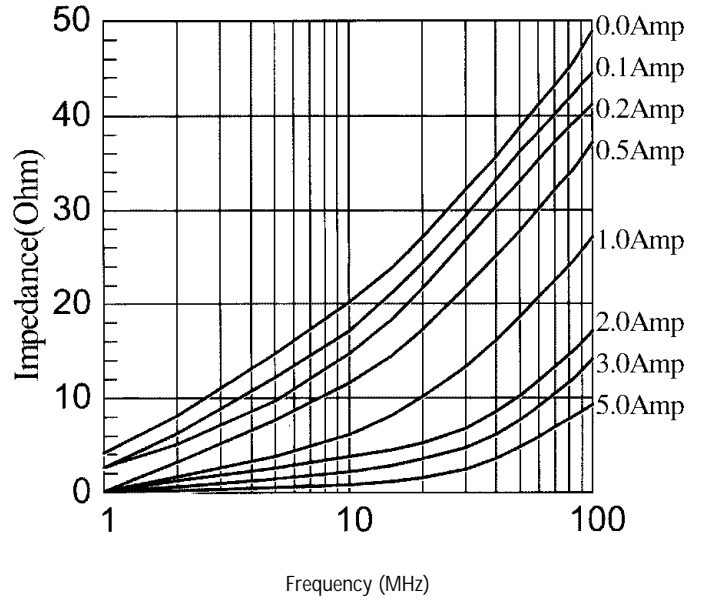
PART NO.	A	B	C	D	E
SMB-302520	3.0±0.15 (0.118±0.006)	2.5±0.10 (0.098±0.004)	2.0±0.10 (0.078±0.004)	1.15±0.15 (0.045±0.006)	1.35±0.65 (0.053±0.026)
SMB-403025	4.0±0.15 (0.157±0.006)	3.1±0.10 (0.122±0.004)	2.6±0.10 (0.102±0.004)	1.35±1.20 (0.053±0.047)	1.35±0.65 (0.053±0.026)
SMB-853025	8.5±0.15 (0.334±0.006)	3.15±0.10 (0.120±0.004)	2.6±0.10 (0.112±0.004)	2.00±0.20 (0.078±0.008)	1.35±0.65 (0.053±0.026)

## TYPICAL ELECTRICAL CHARACTERISTIC CURVES

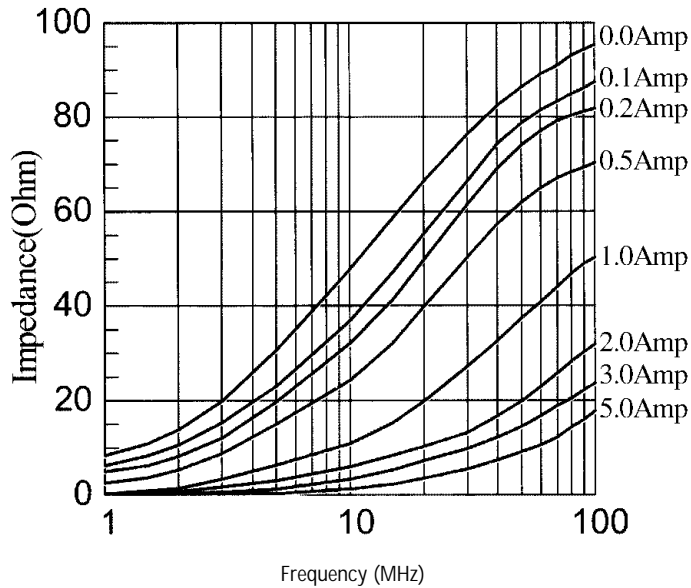
SMB-302520



SMB-403025

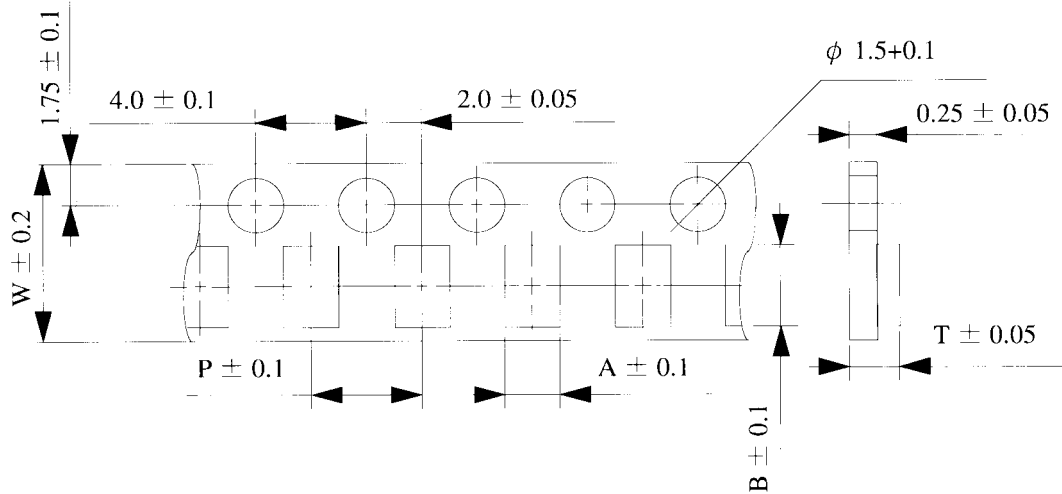


SMB-853025



## PACKAGING

### CARRIER TAPE DIMENSIONS



### PACKAGING QUANTITY

Dimensions in mm

TYPE	A	B	W	P	T	CHIPS/REEL
SMB-302520	3.6	4.9	12	8	3.4	1000
SMB-403025	3.6	4.9	12	8	3.4	500
SMB-853025	3.6	9.5	16	8	3.4	500

### ELECTRICAL CHARACTERISTICS

Part Number	Impedance ( $\Omega$ ) Min. at 25 MHz	Impedance ( $\Omega$ ) Min. at 100 MHz	DC Resistance ( $\Omega$ ) Max.
SMB-302520	20	30	0.5
SMB-403025	30	47	0.6
SMB-853025	60	90	0.9