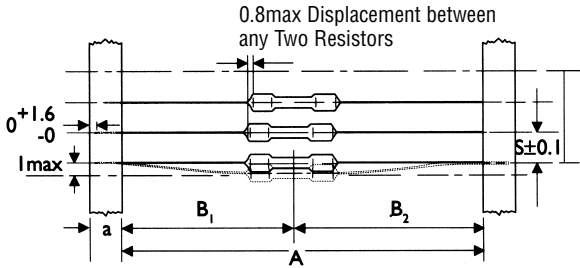


**PACKING METHODS**

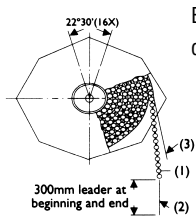


**Bandolier for Axial Leads**

The resistors are supplied on bandolier; either 1000 resistors in ammpack or 5000 resistors on reel.

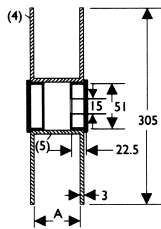
| STYLE    |               | DIMENSIONS |          |       |            |   | Unit : mm |
|----------|---------------|------------|----------|-------|------------|---|-----------|
| Normal   | Miniature     | a          | A        | B1-B2 | S(spacing) | T(max. deviation of spacing)              |           |
| 1/8 WATT | 1/4 WATT MINI | 6±0.5      | 52.5±1.5 | 1.2   | 5          |   |           |
|          |               |            | 26.0±1.5 |       |            |   |           |
| 1/4 WATT | 1/2 WATT MINI | 6±0.5      | 52.5±1.5 | 1.2   | 5          |   |           |
|          |               |            | 26.0±1.5 |       |            |   | 1.0       |
| 1/2 WATT | 1 WATT MINI   | 6±0.5      | 52.5±1.5 | 1.2   | 5          | 1mm Per 10 Spacings, 0.5mm Per 5 Spacings |           |
| 1 WATT   | 2 WATT MINI   | 6±0.5      | 73.0±1.5 | 1.5   | 5          |   |           |
|          |               |            | 52.5±1.5 |       |            |   |           |
| 2 WATT   | —             | 6±0.5      | 73.0±1.5 | 1.5   | 10         |   |           |
|          |               |            | 52.5±1.5 |       |            |   |           |

**TAPE ON REEL PACKING**

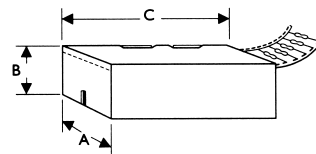


Bandoliers can be reeled; dimension a differ with type.

- (1) resistor
- (2) bandolier
- (3) paper
- (4) flange
- (5) cylinder



**TAPE ON BOX PACKING**



Bandoliers may also be supplied in a cardboard box ("ammpack").

"Ammpack" is an abbreviation of "ammunition packing" The dimensions of A-B-C vary with type and quantity.

| STYLE    |               | TAPE ON REEL      |              | TAPE ON BOX |      |      | Unit : mm/pcs |
|----------|---------------|-------------------|--------------|-------------|------|------|---------------|
| Normal   | Miniature     | ACCORSS FLANGE(A) | QTY PER REEL | W(A)        | H(B) | L(C) | QTY PER BOX   |
| 1/8 WATT | 1/4 WATT MINI | 72                | 5,000        | 78          | 20   | 264  | 2,000/5,000   |
| 1/4 WATT | 1/2 WATT MINI | 48/72             | 5,000        | 78          | 20   | 264  | 1,000/5,000   |
| 1/2 WATT | 1 WATT MINI   | 72                | 2,500        | 78          | 46   | 264  | 1,000         |
| 1 WATT   | 2 WATT MINI   | 95                | 2,000        | 103         | 70   | 265  | 1,000         |
| 2 WATT   | —             | 95                | 1,000        | 103         | 85   | 265  | 1,000         |